

Scenes from a Masked Ball.

Harlequin.

Superior Ed. 4354

□ Down-Bow.
∨ Up-Bow.

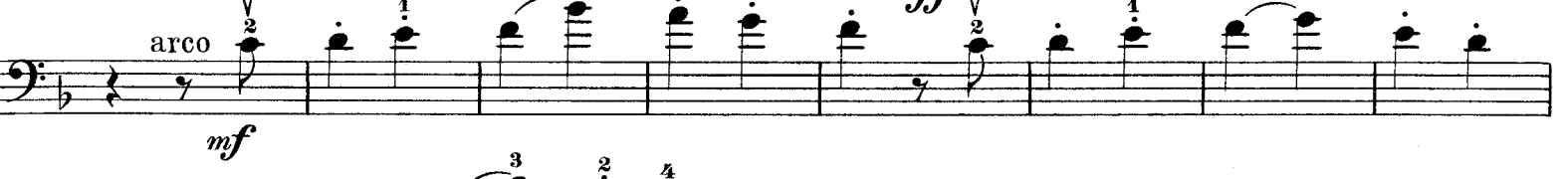
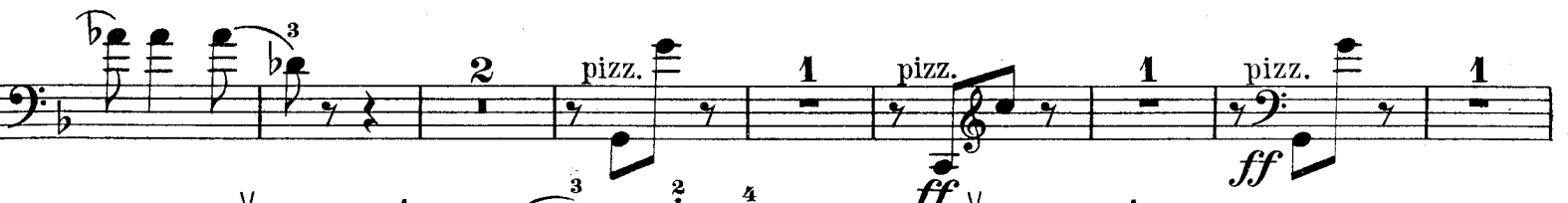
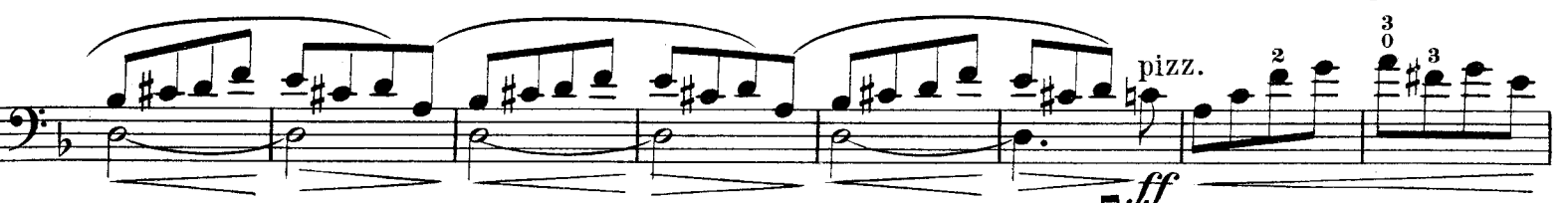
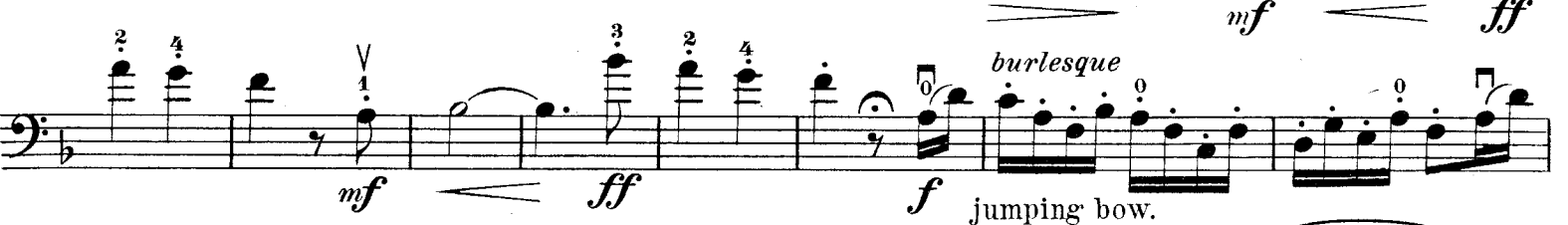
Revised and fingered
by ALVIN BUECHNER.

VIOLONCELLO.

D. POPPER, Op. 3, No. 1.

Vivace con bravura.

Piano.



VIOLONCELLO.

First musical staff in bass clef, featuring a melodic line with slurs and fingerings (3, 2, 4, 1).

Second musical staff in bass clef, starting with the instruction "Same Tempo" and "ff". It contains a complex melodic passage with slurs and fingerings (1, 2, 3, 4).

Third musical staff in bass clef, continuing the melodic line with slurs and fingerings (3, 2, 1, 2, 3).

Fourth musical staff in bass clef, with a dashed line indicating a change in string position from "D string" to "A string". It includes slurs and fingerings (2, 3, 1, 2).

Fifth musical staff in bass clef, featuring a melodic line with slurs and fingerings (3, 4, 2, 1, 3, 2, 1).

Sixth musical staff in bass clef, continuing the melodic line with slurs and fingerings (2, 2, 1, 4, 3, 2, 3, 4, 1, 2, 1).

Seventh musical staff in bass clef, starting with the instruction "Presto" and "rit.". It features a rhythmic pattern with slurs and fingerings (2, 2, 2, 2, 2, 2, 2, 2, 2, 2).

Eighth musical staff in bass clef, continuing the rhythmic pattern with slurs and fingerings (2, 2, 2, 2, 2, 2, 2, 2, 2, 2).

Ninth musical staff in bass clef, featuring a melodic line with slurs and fingerings (3, 2, 4, 1).

Tenth musical staff in bass clef, starting with the instruction "Stretta." and "ff". It contains a melodic line with slurs and fingerings (1, 2).

Eleventh musical staff in bass clef, featuring a melodic line with slurs and fingerings (1, 3, 2, 3, 0, 3, 0, 3, 0, 3, 0, 3, 0).

Twelfth musical staff in bass clef, continuing the melodic line with slurs and fingerings (1, 3, 2, 3, 0, 3, 0, 3, 0, 3, 0).

Thirteenth musical staff in bass clef, ending with a melodic line and a "ff" dynamic marking.